



Infrastructure as Code

2026

iShift's **Infrastructure as Code orchestration** service transforms hardware and cloud resources into a programmable, policy-driven platform. We do not deliver isolated templates. We build an **automation-first framework** that enables teams to deploy complete environments, from networking to compute, reliably and repeatedly.

Enterprise-Grade Orchestration

Blueprinting and Modular Design

We build a standardized library of hardened, reusable infrastructure blueprints defined via Terraform and Ansible, delivered through an automated Jenkins and Git-based pipeline. This creates opinionated modules aligned to your standards (including built-in tagging, logging, and performance baselines), ensuring every deployment is consistent by default.

Policy as Code Guardrails

Policy as Code is embedded directly in pipelines, automated validation for network exposure, encryption, identity, and cost controls. Non-compliant resources fail fast and never deploy.

State Management and GitOps

Infrastructure changes follow the same rigor as application changes: Git as the single source of truth, pull requests for all infrastructure changes, an immutable audit trail of who



changed what, when, and why, safe rollbacks, and repeatable recovery. Infrastructure becomes reviewable, testable, and traceable.

Multi-Platform Interoperability

Consistent delivery model across on-prem, hybrid, and cloud. An abstraction layer that decouples deployment from provider specifics. Ideal for VMware exit strategies, data center modernization, and multi-cloud operations.

Capability	Legacy Infrastructure	iShift IaC Orchestration
Provisioning Speed	Weeks or days	Minutes
Recovery (MTTR)	Manual rebuilds	Automated redeployment
Consistency	Drift and variance	Full environment parity
Compliance	Annual snapshot audits	Continuous automated validation

Business Impact

Lower Total Cost of Ownership

Reduced operational overhead by eliminating repetitive, manual configuration work.

De-Risked Migrations

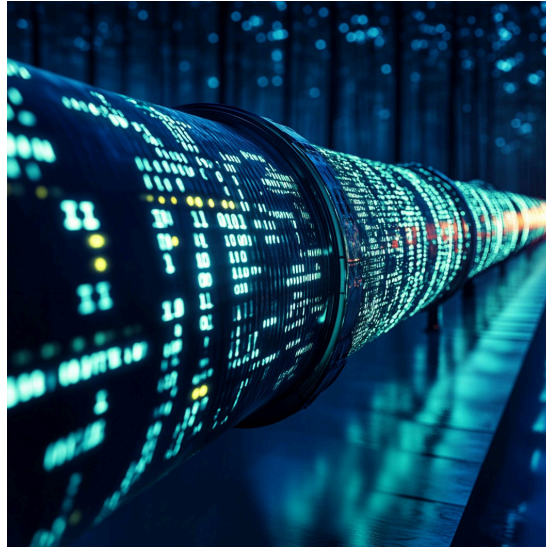
Confidence moving workloads between on-prem and cloud with identical, reproducible infrastructure.

Developer Enablement with Guardrails

Self-service environment provisioning without bypassing security or compliance controls.

Why Enterprises Choose iShift

- ✓ We operate as an **extension of your team**. Not a vendor.
- ✓ **Automation-first**, built for regulated, hybrid, and enterprise environments.
- ✓ Deep expertise across **CloudOps, SecOps, and platform engineering**.
- ✓ Focused on **operational outcomes**, not just code delivery.



Modernize How Business Works. Securely, Intelligently, Together.

✉ info@ishift.net 🌐 <https://www.ishift.net/> [in iShift | LinkedIn](#)

🌐 [Integrated Solutions for Automation](#)